

GROSVENOR HOUSE

Serviced Office Space to Rent in Basingstoke



arenaoffices.com

📞 0330 1246598



Arena Basingstoke: Grosvenor House

📍 Basing View, Basingstoke, RG21 4HG

In collaboration with our award winning architects and interior designers, Grosvenor House has been tirelessly reimagined from a derelict office block into a shining example of inspirational design and high end investment at every level.

Take a closer look inside this beautiful building in the heart of Basing View, boasting roof terrace, coffee shop, gym, meeting rooms, work pods & breakout areas.

Since 2003 we have worked with large corporates, SMEs and entrepreneurs to successfully help them thrive in our serviced offices from 3-100 desks.



Carys England
Centre manager

Why Grosvenor House?

- Rooftop terrace, gym and L'Arte coffee shop.
- Contemporary office suites from 1 to 100 desks with individual climate control & air circulation.
- Interior designed collaboration areas with benches, pods & lounge areas for the exclusive use of our clients.
- Beautiful meeting rooms with the latest state of the art technology & AV designed for innovation.
- Prime location within Basing View, 5 minutes' walk to Basingstoke train station & Waitrose.
- A thriving, inspiring & exclusive working environment for clients & their teams to belong to.
- Customised office space.



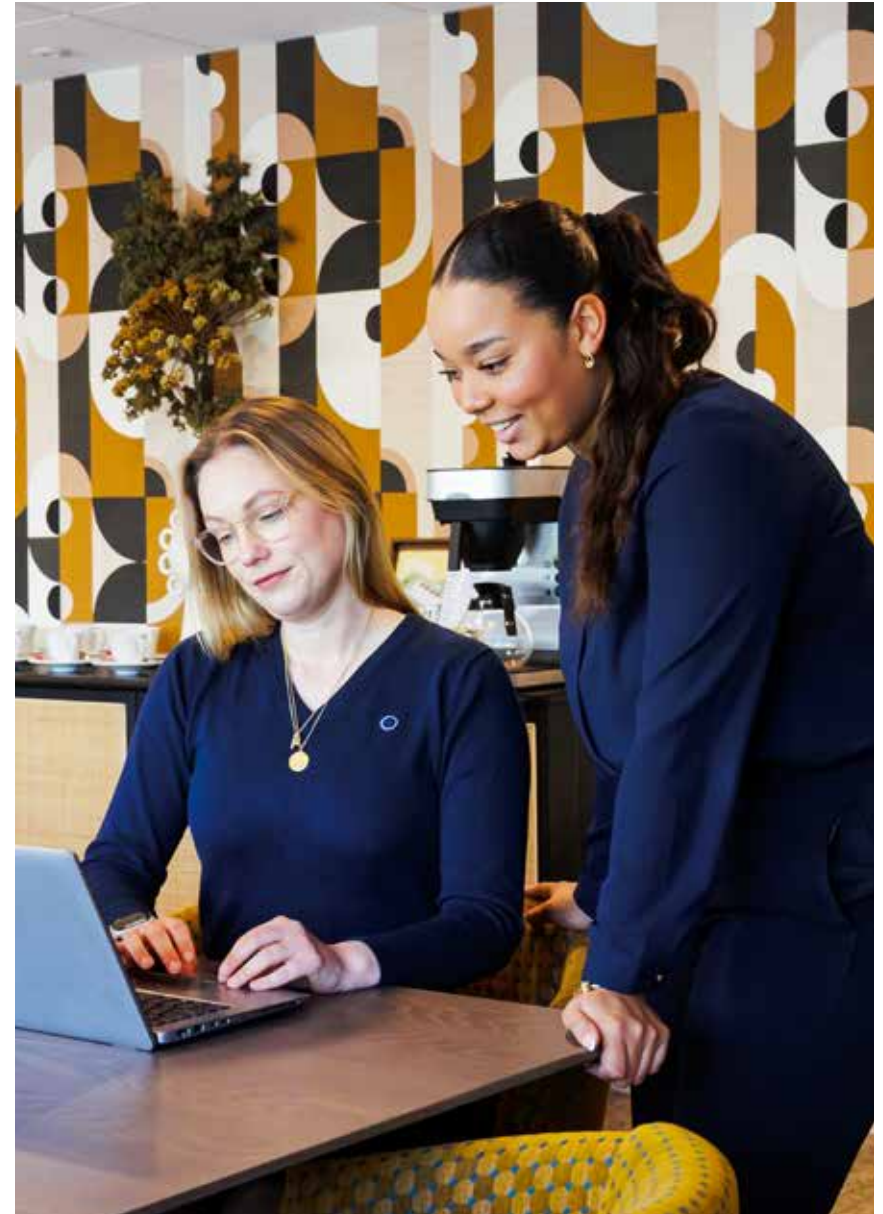


Work Spaces

With a range of scalable, flexible and risk free workspaces designed for the needs of modern business, we work consultatively to find the best fit for our clients now and in the future – whatever the future may look like.

Collaboration Spaces & Meeting Rooms

Grosvenor House benefits from beautiful meeting rooms with the latest state of the art technology & AV designed for innovation. Exclusively created for our clients use only, collaboration spaces have been designed to increase productivity.





Choose your Workspace



3-10 Desks

Our flexible collection of offices allow businesses the freedom to grow on their terms. Short licences, one monthly fee and the ability to upsize, downsize or move out with ease creates a competitive advantage through challenging times.



4-20 Desks

It is our intention to share our clients journey, we have worked in mutual partnership with many of our clients over the years and seen them grow from a 10 desk space to a team of 20+. By understanding our clients, regularly communicating and remaining transparent, these offices create an environment to thrive.

Customising your space

We understand the importance of making the right move, so we help every step of the way. Using our knowledge we work with clients to create a space that truly works for them utilising every sq ft cost effectively. Whether that's creating meeting areas, accommodating a server room or making single offices – we recognise every client is unique.

A bespoke design service

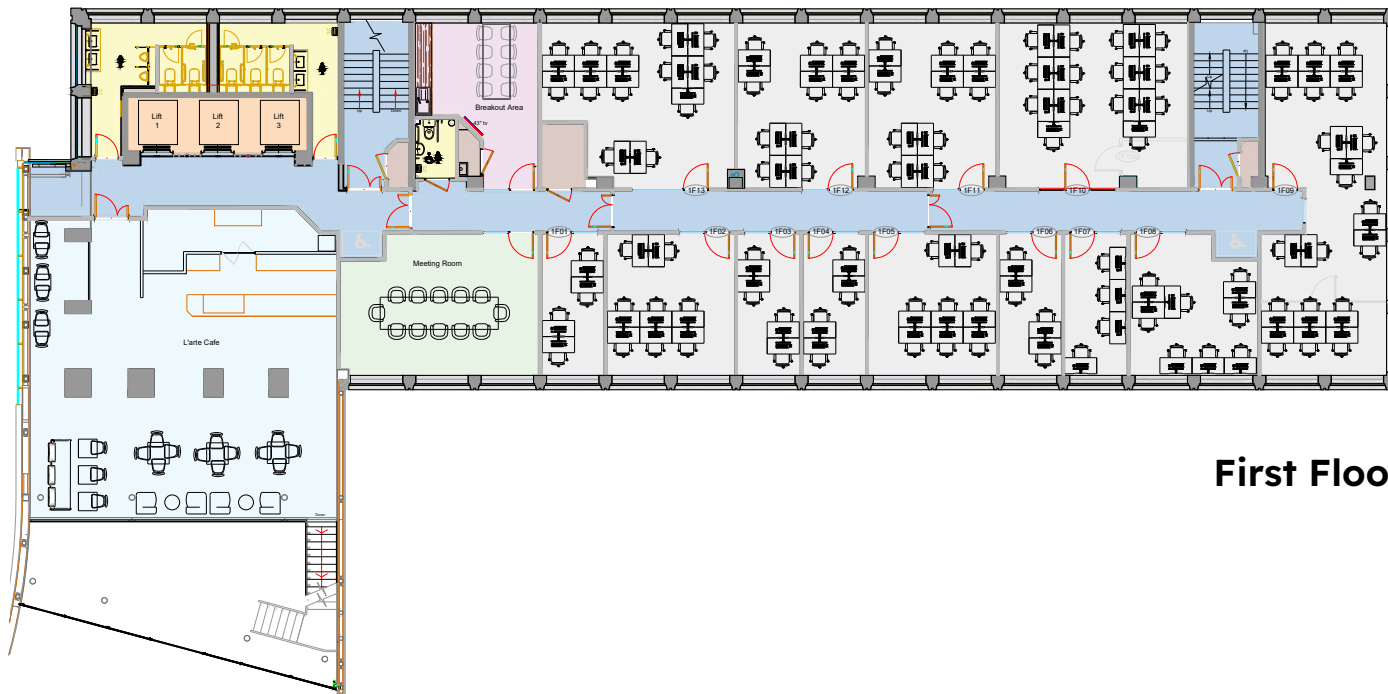
Great design is at the heart of every Arena, so we make sure our office space is too. We collaborate with the best in the industry to deliver a design service for our clients that will inspire new ways to use their space creatively, collaboratively and considerately.

Safe Working Environments

Arena are committed to providing safe and flexible office environments that allow our clients to work with confidence and ease. Our priority now more than ever is to deliver safe, flexible office space that enables our clients to stay agile and adapt to an ever-changing landscape.

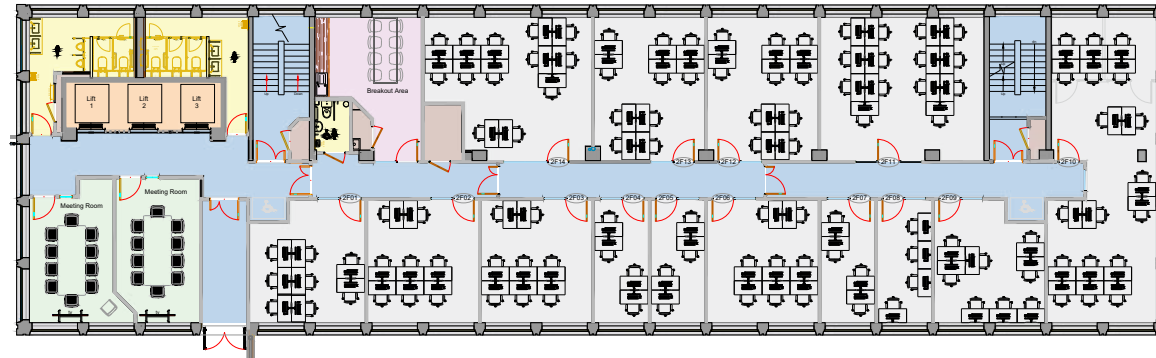




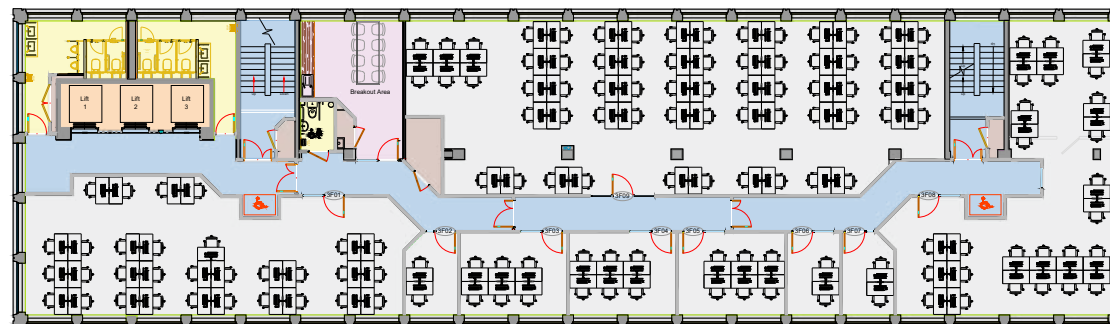


First Floor

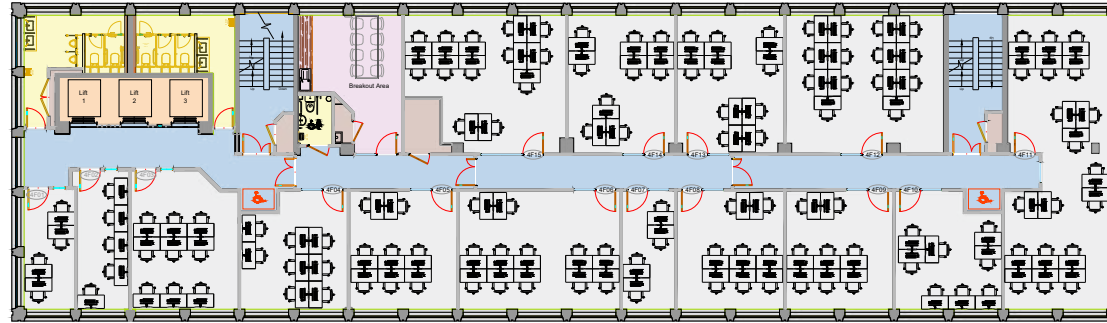
Floor Plans



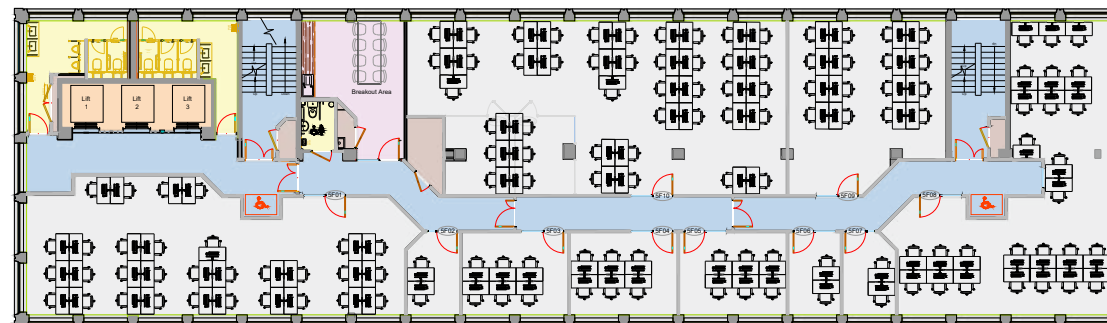
Second Floor



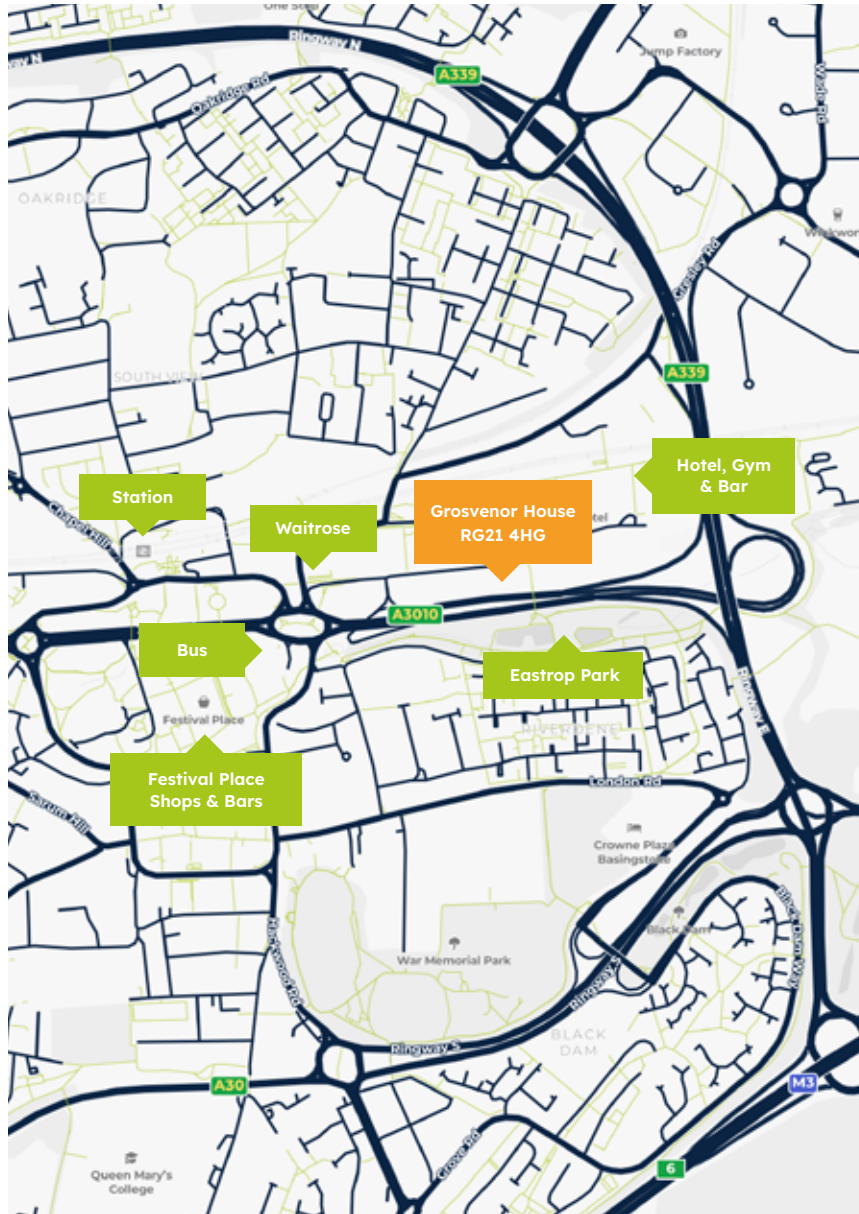
Third Floor



Fourth Floor



Fifth Floor



Basingstoke: Grosvenor House

Located close to Festival Place Shopping Centre, this business centre benefits from an excellent town centre location. This centre is located within a 5 minute walk from Basingstoke train station with frequent, direct services to London Waterloo. The centre is within a 40 minute drive from Heathrow and in close proximity to the M3, providing great access for a simple commute



Rail: Basingstoke Station (0.4 Miles)



Road: M3 (1.5 Miles)



Air: Southampton (30 Miles), Heathrow (35 Miles)



Grosvenor House

📍 Basing View, Basingstoke, RG21 4HG

Visit - [Arenaoffices.com](https://arenaoffices.com)

Call - 0330 1246598

Email - hello@arenaoffices.com

